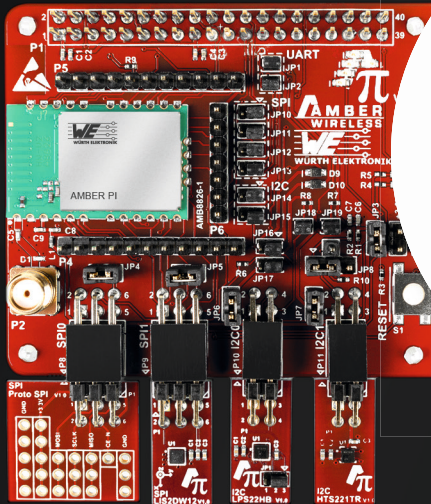


AMBER PI Design Kit

Create your own radio communication



AMBER PI Design Kit



**more
than you
expect**

AMBER PI Design Kit

Create your own radio communication quick and easy. We've got the recipe for the most simple wireless connectivity.

- Gateway: Sub-1-GHz to Wi-Fi, Bluetooth or Ethernet
- Data collector for Sub-1-GHz radio devices
- Wireless remote control station (Model airplane)
- Rapid prototyping for wireless data transmission applications
- Mobile wireless sensor board for home and industrial environment (Weather station, Motion tracking)

AMBER PI

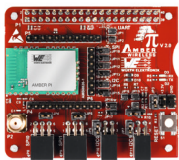
Part-No: 2609017281001



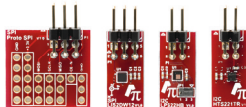
The **AMBER PI** is an expansion board for the Raspberry Pi 3B that equips the Raspberry Pi with a sub-1-GHz RF-interface provided by Würth Elektronik eiSos. Included with the AMBER PI are environmental sensors and a remote communication RF-dongle. The supplied temperature, humidity, pressure and motion sensors together with the AMBER PI give the freedom to create unique applications based on the Raspberry Pi.

Along with the AMBER PI, Würth Elektronik eiSos provides a software development kit with the **AMBER PI driver in C-code** that includes functions and examples to enable quick and easy custom application development using the AMBER PI. Further the SDK includes drivers for interacting with the most popular eiSos wireless connectivity radio modules.

The **AMBER PI** provides two I2C and two SPI sockets to connect with other I2C- and SPI-slaves. As delivered, the AMBER PI Kit includes the following sensor boards that contain three different sensors. The fourth board can be used as a base PCB for further development.



AMBER PI



4 Sensorboards



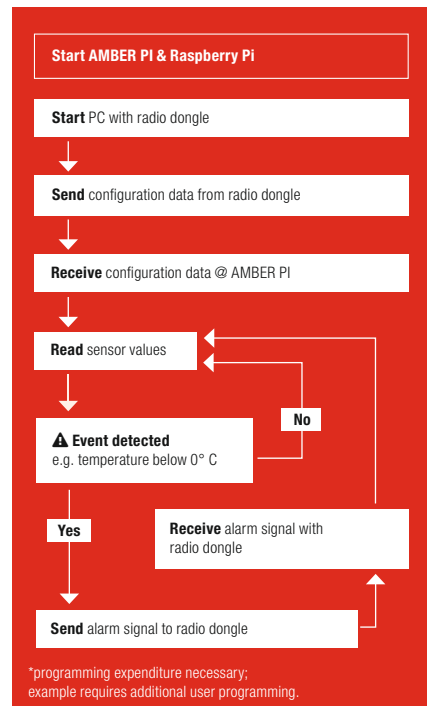
2 Antennas



Radio dongle



Example*



Specifications are subject to change without further notice.